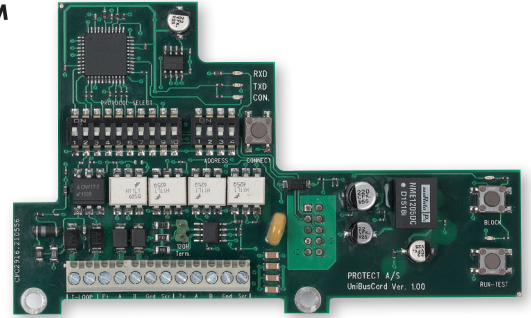


UniBusCard™

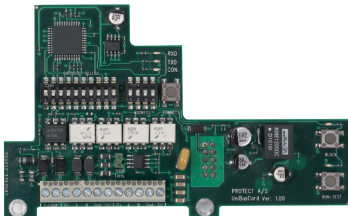


Single twisted pair communication to and from the fog cannon - governed by the IntelliBox™. The UniBusCard brings together all the benefits of IntelliBox and IntelliSuite in the building's alarm system and the subsequent setup and configuration of the fog cannon becomes "Point & Click" in the IntelliBox system. All fog cannon features can be integrated in the IntelliBox's setup menus.



Save time and money

PROTECT UniBusCard can save the end users and the alarm installers a lot of time and money.



Quick installation

UniBusCard is an add on expansion board which can be mounted easily in only a few seconds.



Upgrade the fog cannon with UniBusCard

UniBusCard works in all PROTECT Fog Cannon (except Xtratus).

Functions:

- Databus-controlled card (RS485)
- Fog setting either via DIP switch or software-controlled
- Arm- and Trigger signals via databus from the alarm system
- Feedback signals (operating and error signals) back to the alarm system via the IntelliBox's inputs and outputs
- All service features known from IntelliSuite and IntelliBox is available via databus
- Full access to configuration and management of user rights
- Test and/or priming the pump with a special push button on the PCB or from the alarm system
- Button on the UniBusCard - or from the alarm system - for easy and quick blocking of fog while doing service & maintenance on the alarm system
- From 1 to 16 fog cannon units can be connected to IntelliBox
- Great savings in time and cable when connecting one or more fog cannon to an existing installation
- Can be installed in all PROTECT models in just a few seconds (Xtratus excluded)

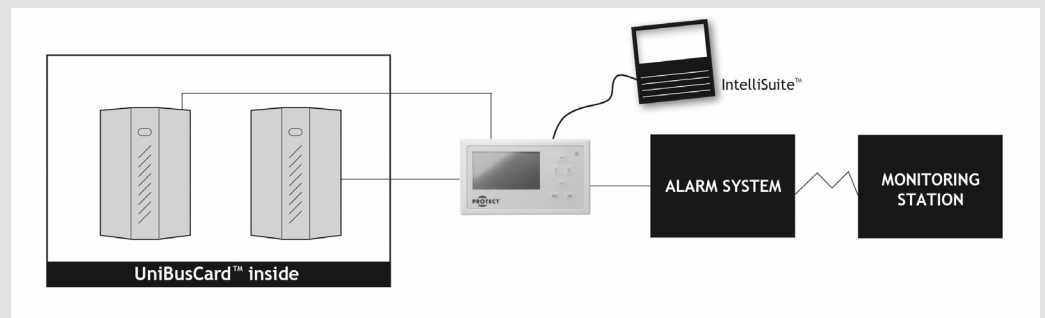
Specifications:

Input:

- Full galvanic isolation on all inputs
- Tamper loop
- P+ terminal for looping IO-module power
- Data a og b terminals
- GND-terminal for data
- Scr-terminal for screen on data cable

Output:

- Full galvanic isolation on all outputs
- P+ terminal for looping IO-module power
- Data a og b terminals
- GND-terminal for data
- Scr-terminal for screen on data cable



SECURED IN SECONDS