

PROTECTGLOBAL.COM

IntelliSuite™

INSTALLATION AND USE



SECURED IN SECONDS



IntelliSuite™ - installation and use

1. Access to IntelliSuite™	4
2. Installation of IntelliSuite™	5
3. Use IntelliSuite™	10
Connection USB	10
System monitor	11
System report	11
Commands.	12
Flash loader.	13
Connect fog machine LAN.	14
Go into Networks setup	15
Go to connection	15
On the fly	16
Endpoint list	17
Connect IntelliSuite™ on WAN to fog machine with IPCard™ on LAN.	18
Example	18
4. Test report example	19



IntelliConnector™
- the special cable
for connection
between computer
and Fog Cannon™ .

IntelliSuite™ is a diagnostic software product which can retrieve both real-time information and legacy data from the Fog Cannon™ . Using IntelliSuite™ you get high quality installations, more efficient and professional service & trouble shooting - and more satisfied customers!

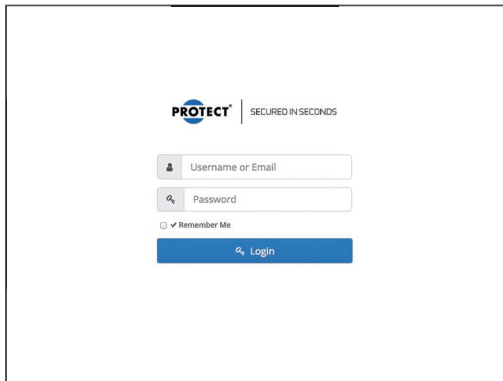


Wireless security fog

With IP connectivity and IntelliSuite™ you can connect to the Fog Cannon™ from your PC wherever you are in the world - and still use all the functionality of IntelliSuite™ .




1. Access to IntelliSuite™

The free IntelliSuite™ software is available on the PROTECT™ Download Center. If you do not have access to the download center, please contact your alarm installer or the PROTECT™ Distributor/Partner in your country to request the software.



The screenshot shows a login interface for PROTECT. At the top center is the PROTECT logo, which consists of the word "PROTECT" in a bold, black, sans-serif font next to a blue circle containing a white stylized 'P'. To the right of the logo, the text "SECURED IN SECONDS" is displayed in a smaller, black, sans-serif font, separated from the logo by a vertical line. Below the logo and text are two input fields. The first field is labeled "Username or Email" and has a small person icon on its left side. The second field is labeled "Password" and has a magnifying glass icon on its left side. Below these fields is a checkbox labeled "Remember Me" with a checkmark. At the bottom of the form is a blue button with the text "Login" and a magnifying glass icon on its left side.

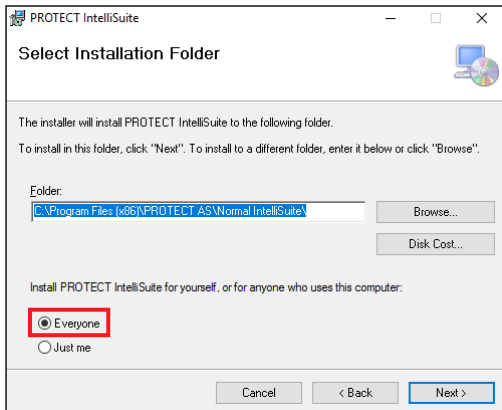
2. Installation of IntelliSuite™

 IntelliSuite m USB driver	10-11-2016 11:14	Filmappe	
 IntelliSuite Installer V2.40.4.1	08-03-2017 14:38	Windows Installer...	1.157 KB
 IntelliSuite Installer V2.40.4.1	08-03-2017 14:28	ZIP-komprimeret ...	860 KB

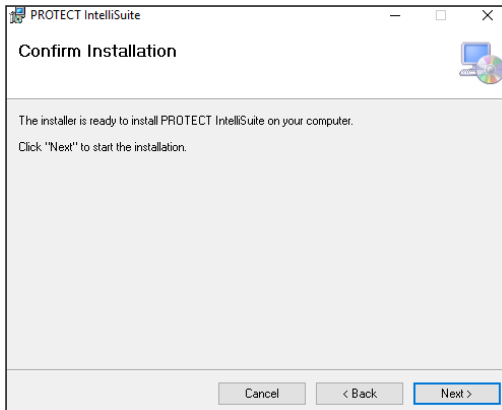
Install the IntelliSuite™ installation file. If you have received a ZIP file, unzip it before installation.



In the first window click “Next”.



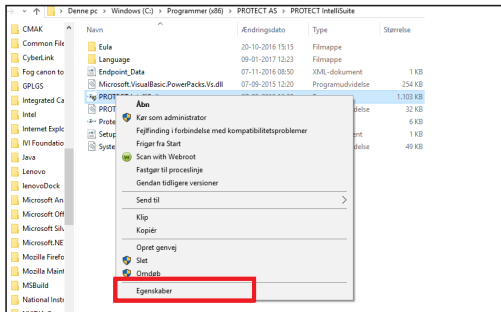
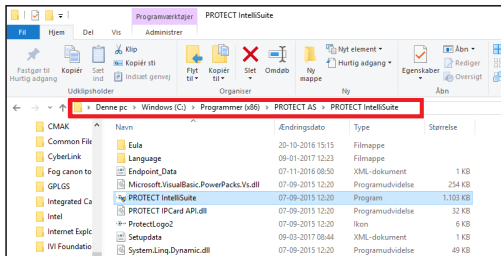
In the second window click on “Everyone” before “Next”.



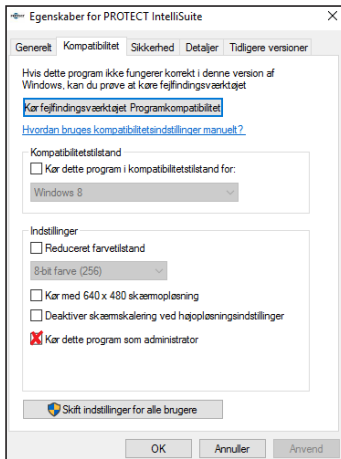
Then click next through the entire installation.

Before you run the IntelliSuite™

Choose the PROTECT IntelliSuite™ library from your computer.



Right-click at PROTECT IntelliSuite™ file and left-click at Properties.



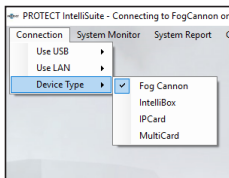
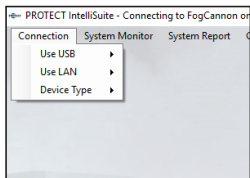
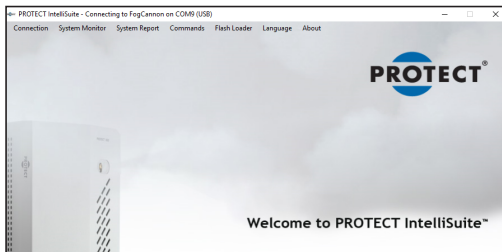
Select Compatibility. Tick the "Run as administrator".

Run the IntelliSuite™.

Agree with the license to use IntelliSuite™.

Choose language.

3. Use IntelliSuite™



Connection USB

Connect through IntelliConnector™.

- Monitor the Fog Cannon™.
- Generate system report.
- Programme the IPCard™.
- Upgrade firmware in all the products.

System monitor

System monitor allows you to see live information on the device you have chosen.

Remote Control Signal Monitor

Remote Control Signal Monitor

Connected device:
Protect 601 EU Software Version: 300
PCB-SerialNumber: 1205000568
Location Ident/Location:
Single 6006 on table

Auxiliary 12V supply:
Voltage: 13,45V
Current: OK (~90mA).

Dipswitch Settings:
Current Settings: ??? - ON - OFF - OFF - OFF - ON - OFF - OFF - ON - OFF
Fog setting: ON - OFF - OFF
No Smoke data available for this model
Dip-5: OFF -> Arm is active when voltage is NOT applied.
Dip-6: ON -> Primary trigger is active when voltage is applied.
Dip-7: OFF -> Secondary trigger is active when voltage is NOT applied.
Dip-8: OFF -> Fire Alarm Delay is disabled.
Dip-8: ON -> Panic Function Enabled.
Dip-9: OFF -> Beeper is disabled.
Only disable beeper when device is monitored by Alarm System.

Battery:
Battery Voltage: 25,04V
BatteryTest VoltageDip: 1,21V
Battery Condition at last test: Good

Fluid:
Fluid Level: 323
Fluid type to use: ?

Inputs:
ARM input is activated. Voltage is NOT applied.
Primary input is NOT activated. Voltage is NOT applied.
SECONDARY input is activated. Voltage is NOT applied.
Disable input is NOT activated. Voltage is NOT applied.
Fire input is NOT activated. Voltage is NOT applied.

System Messages:
System Hot and ready.

System Status:
System: Hot and ready.

System Messages:
System Hot and ready.

Battery Voltage: 25,04V
BatteryTest VoltageDip: 1,21V
Battery Condition at last test: Good

Fluid:
Fluid Level
Fluid type

Outputs:
Fault Relay
Fluid Relay
Smoke Re

NOT Disabled

Primary Signal NOT Active (Z1)

Zone 2 NOT Active

Zone 3 NOT Active

Panic NOT Active

Fire Alarm NOT Active

System NOT Blocked

NOT Heat Disabled

Testfire NOT Activated

R. Disable

R. Primary (Z1)

R. Zone 2

R. Zone 3

R. Panic

R. Fire Alarm

R. Blocked

R. Heat Dis

R. Test Fire

If you have chosen “Fog Cannon™”, you can also see the remote control signal.

System report

Create a log file that gives the last 300 events on the fog machine, DIP setting, temperature, number of shots, present input and output, and errors on the fog machine.

← Report

System Report for Fog generator Connected to IPCard.

IPCard software version: Protect I-Card V1.04 RELEASE
Serial Number: 1511000001
IntelSuite software version: Version 2.40.5.0

Time: 09-03-2017 11:59:04
Circuitboard Serial Number: 1205000568

Device: Protect 601 EU Software Version: 300
Location Identification: Single 600i on table

Machine Life Time: 0057933063 Equivalent to: 1 Y, 305 D, 12 H, 31 M, 3 S
Accumulated Heating Time: 0057933069 Equivalent to: 1 Y, 305 D, 12 H, 31 M, 9 S

Number of Fog Releases: 49
Fluid Level: 323 ml
Voltage drop during last Battery Load test: 1,21 Volt

Current Dipswitch Setting: ??? - ON - OFF - OFF - OFF - ON - OFF - OFF - ON - OFF
DipswitchLog:

Pos	Time	DipSetting
0	0047062489	??? - ON - ON - ON - OFF - ON - OFF - OFF - ON - OFF
1	0047062820	??? - ON - OFF - OFF - OFF - ON - OFF - OFF - ON - OFF
2	0020612041	??? - OFF - OFF - OFF - OFF - ON - OFF - OFF - ON - OFF
3	0027170885	??? - ON - OFF - OFF - OFF - ON - OFF - OFF - ON - OFF

Fog Settings: ON - OFF - OFF
No Smoke data available for this model

StatusData:
(E1) Mains Power Fail: False
Ready First Time: True
(r) Ready Now: True
(E6) Board Temp Low: False
(E7) Board Temp High: False
(E10) Thermocouple Temp Low: False
(E9) Thermocouple Temp high: False
(E12) Pump Timeout: False
Pump Active: False
System Stop: False
(bA) Battery Detected: True
(E4) Battery Voltage Low: False

Refresh Report

Save Report as file

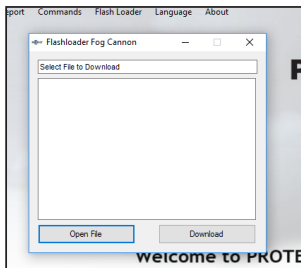
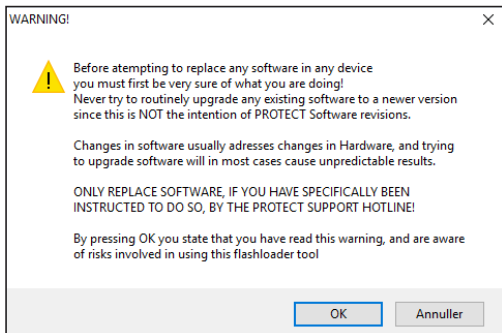
Commands

The commands varies depending on the connected Fog CannonTM model and the software version.

Flash loader

Upgrade the firmware of the device.

Press OK to the warning.

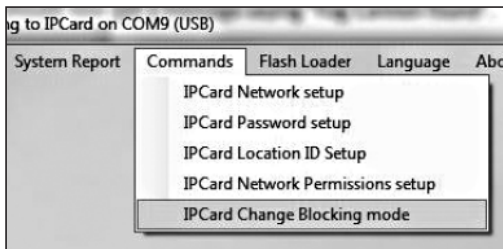
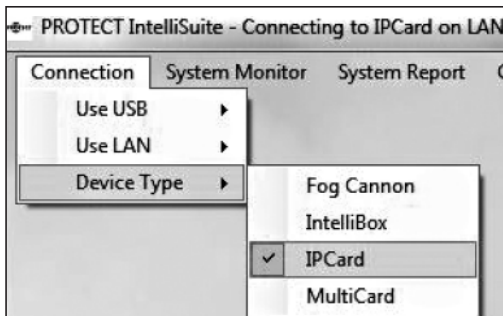


Open the file that matches the device and download it to the device.

When it is finished, it writes "Done OK" and the device will restart.

Connect Fog Cannon™ to LAN

Connect the IPCard™ via the IntelliConnector™ USB.



Go to Network setup

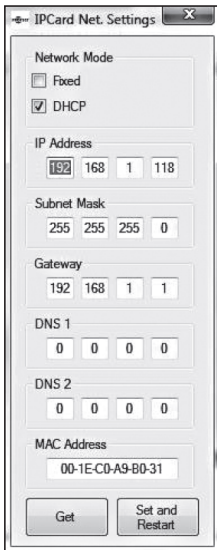
Here you have the DHCP IP address on the IPCard™.

If you choose fixed IP address, type the IP address, Subnet mask and Gateway.

If you have changed anything, Set and Restart.

Port number on IPCard™ is 4001 and cannot be changed.

Password setup: Default, 1234000000. When the default password is programmed, the IPCard™ will not ask for password.



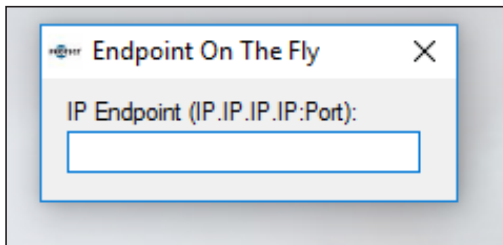
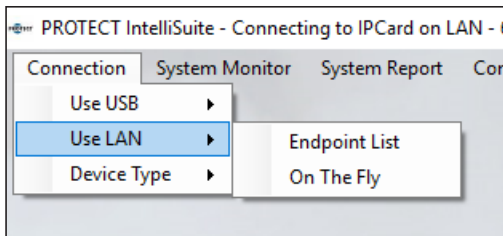
The screenshot shows a dialog box titled "IPCard Net. Settings" with a close button (X) in the top right corner. The dialog is divided into several sections for network configuration:

- Network Mode:** Contains two radio buttons. "Fixed" is unselected, and "DHCP" is selected.
- IP Address:** A row of four input fields containing the values 192, 168, 1, and 118.
- Subnet Mask:** A row of four input fields containing the values 255, 255, 255, and 0.
- Gateway:** A row of four input fields containing the values 192, 168, 1, and 1.
- DNS 1:** A row of four input fields containing the values 0, 0, 0, and 0.
- DNS 2:** A row of four input fields containing the values 0, 0, 0, and 0.
- MAC Address:** A single text input field containing the value 00-1E-C0-A9-B0-31.

At the bottom of the dialog, there are two buttons: "Get" on the left and "Set and Restart" on the right.

Go to connection

If you intend to use this IP address often, select End-point List.



On the fly

Type the IP address and port number.

xxx.xxx.xxx.xxx:pppp.

Endpoint list

Identification: The name of the Fog Cannon™.

Endpoint: IP address and port number.

xxx.xxx.xxx.xxx:pppp.

Password: This is NOT the password on the IPCard™.

Endpoint Selector

Change Master Password

Add new endpoint.

Identification:

Endpoint (IP.IP.IP:Port):

Password:

Save

Connect IntelliSuite™ on WAN to the Fog Cannon™ with IPCard™ on LAN

Make a portforward rule in the router that allows connection from a port number on the public IP address to the IP address and port on the IPCard™.

Add or Modify a Virtual Server Entry

Service Port: 9001 (XX-XX or XX)
Internal Port: 4001 (XX, Only valid for single Service Port or leave it blank)
IP Address: 192.168.1.118
Protocol: ALL
Status: Enabled
Common Service Port: --Select One--

Save Back

Destination Invert match. WAN address Type Address/mask
Type Address/mask

Destination port range Other 9001 Other
From port Custom To port Custom
Specify the port or port range for the destination of the packet for this mapping. The 'to' field may be left empty if only mapping a single port.

Redirect target IP 192.168.1.118
Enter the internal IP address of the server on which to map the ports.
e.g.: 192.168.1.12

Redirect target port Other 4001
Port Custom
Specify the port on the machine with the IP address entered above. In case of a port range, specify the beginning port of the range (the end port will be calculated automatically).

Example

Rule in firewall, port 9001 to 192.168.1.118:4001.

Public IP address: 87.45.200.100.

Type this IP address into IntelliSuite™:
87.45.200.100:9001.

4. Test report example

System Report for Fog generator Connected to IPCard.

IPCard software version: Protect IP-Card V1.05
Serial Number: 1511000001
IntelliSuite software version: Version 2.40.5.1

Time: 26-06-2017 14:59:40
Circuitboard Serial Number: 1205000568

Device: Protect 601 EU Software Version: 300
Location Identification: Single 600i on table

Machine Life Time: 0067356668 Equivalent to: 2 Y, 49 D, 14 H, 11 M, 8 S
Accumulated Heating Time: 0067291138 Equivalent to: 2 Y, 48 D, 19 H, 58 M, 58 S

Number of Fog Releases: 86
Fluid Level: 687 ml
Voltage drop during last Battery Load test: 1,70 Volt

Current Dipswitch Setting: ??? - ON - OFF - OFF - OFF - ON - OFF - OFF - ON - OFF
DipswitchLog:

Pos	Time	DipSetting
0	0047062489	??? - ON - ON - ON - OFF - ON - OFF - OFF - ON - OFF
1	0047062620	??? - ON - OFF - OFF - OFF - ON - OFF - OFF - ON - OFF
2	0020612041	??? - OFF - OFF - OFF - OFF - ON - OFF - OFF - ON - OFF
3	0027170885	??? - ON - OFF - OFF - OFF - ON - OFF - OFF - ON - OFF

Fog Settings: ON - OFF - OFF
This Fog Setting means: 20s ↔ 290m3 at industry standard visibility.
Divide Fog Volume by 2 for, 1m visibility according to EN50131-8

IntelliSuite™ log file

Blue: Software version and serial number on IPCard™ / MultiCard™ if present and IntelliSuite™ version.

Red: Time for generating the report. Main PCB serial number and software version.

Green: The time the PCB and heating element has been running.

Purple: Number of “shots”/fog releases, fluid level and volt drop from the last battery test.

Orange: Current DIP setting. The last DIP setting change and the timer DIP setting.

StatusData:
(E1) Mains Power Fail: False
Ready First Time: True
(r) Ready Now: True
(E8) Board Temp Low: False
(E7) Board Temp High: False
(E10) Thermocouple Temp Low: False
(E9) Thermocouple Temp high: False
(E12) Pump Timeout: False
Pump Active: False
System Stop: False
(bAt) Battery Detected: True
(E4) Battery Voltage Low: False
(E6) Battery LoadTest Fault: False
(E14) Battery LoadTest Circuit Failed: False
(E5) Battery Max Charging Time Exceeded: False
(C) Battery is Charging: False
(E3) Fire Alarm Active: False
Fire Alarm Delay Active: False
(E2) Low Fluid Alarm: False
Fluid Container Present: True
(bt) Blocking Timer 1 Active: False
(bt) Blocking Timer 2 Active: False
(E13) X-12V Overload Shut Down: False
X-12V Shut Down: False
Fault Relay Active: False
Fluid Relay Active: False
Smoke Relay Active: False
Fan Running: True
Aux Switch Active: False
(d) Disable Active: False
(Hd) HeatDisable Active: False
External Tamper Switch open: True
(E16) Panic button NOT released: False

Status data

The status when the report was made. True = The status is present, False = The status is NOT present.

Inputs:

(A) Arm: True
(P) Primary Trigger: False
(S) Secondary Trigger: True
(d) Disable: False
(E3) Fire Alarm: False

Analog Measurements:

Board_Temperature: 34°C
TC_Sensor_temperature: 324°C
Battery Voltage: 25,18V
X-12V Voltage: 13,44V

Blue: Input status, True = triggered, False = NOT triggered.
A, P and S depending on DIP 5, 6, and 7.

Red: Temperature on PCB and the heating element.
Voltage on battery and AUX 12V.

Log Content:				
Pos	Time	EventRealTime	Type	EventText
260	0067362849	26-06-2017 16:42:48	49	Charging of Batteries Ended
259	0067362689	26-06-2017 16:39:48	48	Charging of Batteries Started
258	0067362658	26-06-2017 16:39:37	47	Battery Load Test
257	0067269058	25-06-2017 14:39:37	47	Battery Load Test
256	0067175458	24-06-2017 12:39:37	47	Battery Load Test
255	0067082829	23-06-2017 10:55:48	49	Charging of Batteries Ended
254	0067081869	23-06-2017 10:39:48	48	Charging of Batteries Started
253	0067081858	23-06-2017 10:39:37	47	Battery Load Test
252	0066988258	22-06-2017 08:39:37	47	Battery Load Test
251	0066894658	21-06-2017 06:39:37	47	Battery Load Test
250	0066802689	20-06-2017 05:06:48	49	Charging of Batteries Ended
249	0066801069	20-06-2017 04:39:48	48	Charging of Batteries Started
248	0066801058	20-06-2017 04:39:37	47	Battery Load Test
247	0066707649	19-06-2017 02:42:48	49	Charging of Batteries Ended
246	0066707469	19-06-2017 02:39:48	48	Charging of Batteries Started
245	0066707458	19-06-2017 02:39:37	47	Battery Load Test
244	0066614049	18-06-2017 00:42:48	49	Charging of Batteries Ended
243	0066613869	18-06-2017 00:39:48	48	Charging of Batteries Started
242	0066613858	18-06-2017 00:39:37	47	Battery Load Test
241	0066520389	16-06-2017 22:41:48	49	Charging of Batteries Ended
----- Timeline Broken -----				
79	0062761817	?-04-05-2017 10:38:56	3	Device Reset by Reset Switch
78	0062755198	?-04-05-2017 08:48:37	11	E4 - Low Battery Voltage Detected
77	0062755187	?-04-05-2017 08:48:26	21	E14 - Battery Load Test Circuit Failed
76	0062755187	?-04-05-2017 08:48:26	14	E6 - Battery Load Test Failed
75	0062755187	?-04-05-2017 08:48:26	47	Battery Load Test

Blue: The event number. (max. 300 events)

Red: The event time in seconds.

Green: The event in real time, calculated from the PC/laptop clock.
 ? = estimated time.
 ??? = Timeline has been broken. Not possible to tell how long time.

Purple: Type number is only information for engineer

Orange: Explanation on event.

Further information is available in the manual, troubleshooter and the dimension and service guide.

INFO

Visit PROTECTGLOBAL.COM to find information about the distributor in your country.

PROTECT A/S

Hasselager Centervej 5 · DK-8260 Viby J · Tel.: (+45) 86 72 18 81
info@protectglobal.com · protectglobal.com