

Connect the fluid hose and cord to the new bag and push it up into the machine. The hose connector must click and the little metal part jump out.



The metal plate is screwed back on.



*Scan the code with a smartphone
to watch how to replace the fluid bag.*



SECURED IN SECONDS

PROTECT A/S

Hasselager Centervej 5 · DK-8260 Viby J · Tel.: (+45) 86 72 18 81
info@protect.dk · www.protectglobal.dk

Version 7, February 2019

Item no.: 21703_000324DK

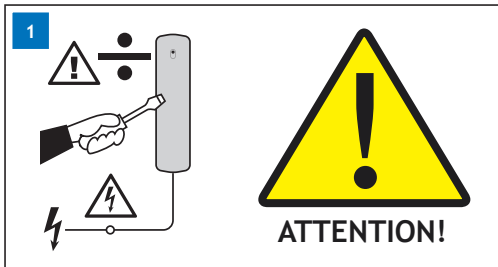
PROTECTGLOBAL.COM

REPLACEMENT OF THE QUMULUS® FLUID BAG

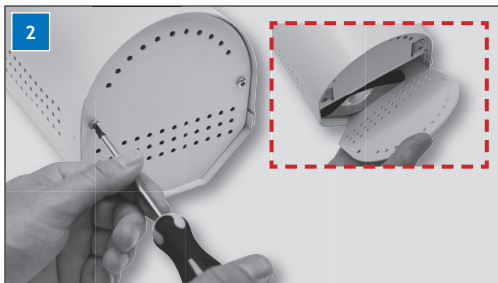
Mounting of new coupling



SECURED IN SECONDS



IMPORTANT: Turn off power supply of the QUMULUS®!
DON'T TOUCH! Cool down for at least one hour.



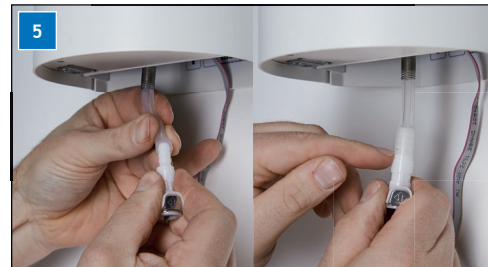
Remove the two screws and remove the metal plate in the bottom of the Fog Cannon™. Remove the empty fluid bag.



Remove the cord from the empty bag by pressing on the bottom of the plug while gently pulling it out. Also, remove the fluid hose by unscrewing the cap.



Slide the metal coil on the hose slightly upwards and cut the hose as shown.



Fit the supplied new coupling in the hose. It is important that the hose is pushed all the way down over the coupling as shown.



Move the metal coil as shown.